

Archer & Addison

EFFORTLESS DESIGNER LIVING



LANSER *living*



Artist's impression. Final selections subject to change

"Good design is forever." - Van Day Tux

01. WELCOME HOME

Lanser Living is excited to introduce Archer and Addison - two brand new Torrens titled turnkey homes exclusive to Lanser's award-winning locations.




These architecturally designed homes have been designed for effortless living and have been planned by the Lanser team to maximise natural light, offer ample storage and provide plenty of space for entertaining.

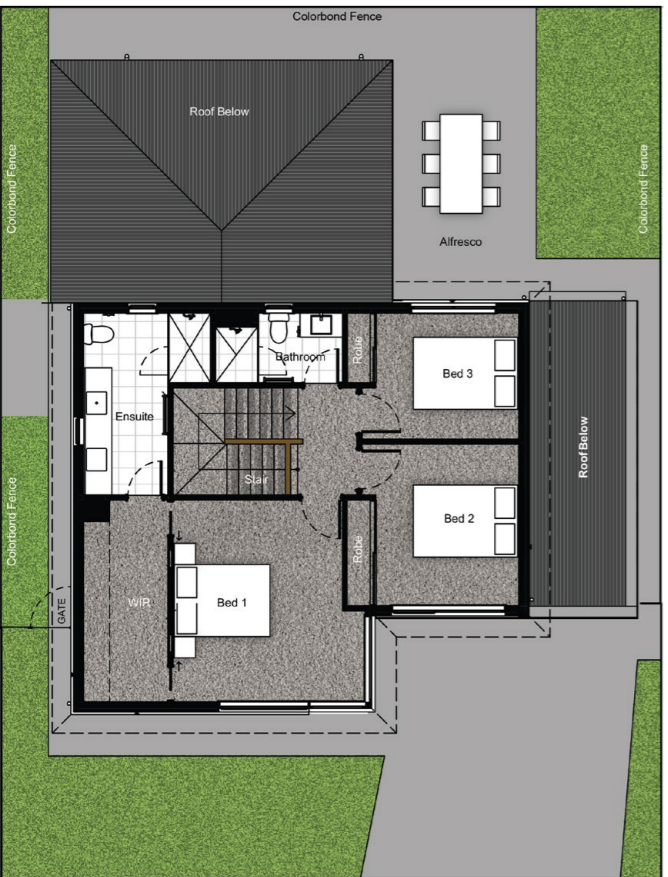
You will also be able to enjoy a seamless home building journey. Each home has been designed to create an effortless lifestyle for you with an award-winning address. From architectural solutions that offer simple home maintenance to a build journey that has been pre-selected and approved by our in-house design team - you can enjoy the luxury of moving into a fully completed designer home upon handover.

Compact and stylish - these homes both come with premium features including waterfall stone benchtops, high-end tapware, designer appliances, landscaping and more. With Archer and Addison you'll have more time to do the things you love, in a location you'll love to call home.



Artist's impression. Final selections subject to change

 3
  2.5
  1
  2



Archer - First Floor



Archer - Ground Floor

02. ARCHER

Archer has been cleverly crafted as a compact family home that offers endless luxury with little maintenance.

Architecturally designed, Archer ensures that there is plenty of space in this luxurious, light-filled home for entertaining. From its cantilevered entrance to the designer kitchen that opens onto a generous alfresco area – the ground floor is also home to a spacious living hub and guest powder room.

With its elevated views and generous proportions, Archer's master suite is the perfect place to retreat to. A concealed walk-in-robe and spacious ensuite featuring a double vanity creates the perfect first floor sanctuary.

We also know that you'll want to love your location as much as you love your new home, which is why Archer is a unique home design exclusive to a selection of Lanser's award-winning developments.

*1. All images are for illustrative purposes only and should be used as a guide. Certain fixtures, finishes and features may also vary from actual development. 2. House and Land Package pricing is based on the standard house plan and are subject to change in the event there are any variations to the structure, floorplan or finishes. Stamp duty, legal fees or any other settlement costs associated with the purchase are not included as part of the advertised price. 3. Purchasers should confirm all plans, specifications, inclusions and pricing with Lanser prior to entering into any contracts. 4. We have taken great care to ensure the accuracy of the information provided, however Lanser gives no warranty and makes no representation as to the accuracy or sufficiency of any description, photograph, floorplan, illustration or statement. 5. Please contact a Lanser sales consultant if you require any further information. Every care has been taken to ensure all details are correct at time of printing. E&OE



Artist's impression. Final selections subject to change



Artist's impression. Final selections subject to change



Artist's impression. Final selections subject to change



Artist's impression. Final selections subject to change



Artist's impression. Final selections subject to change

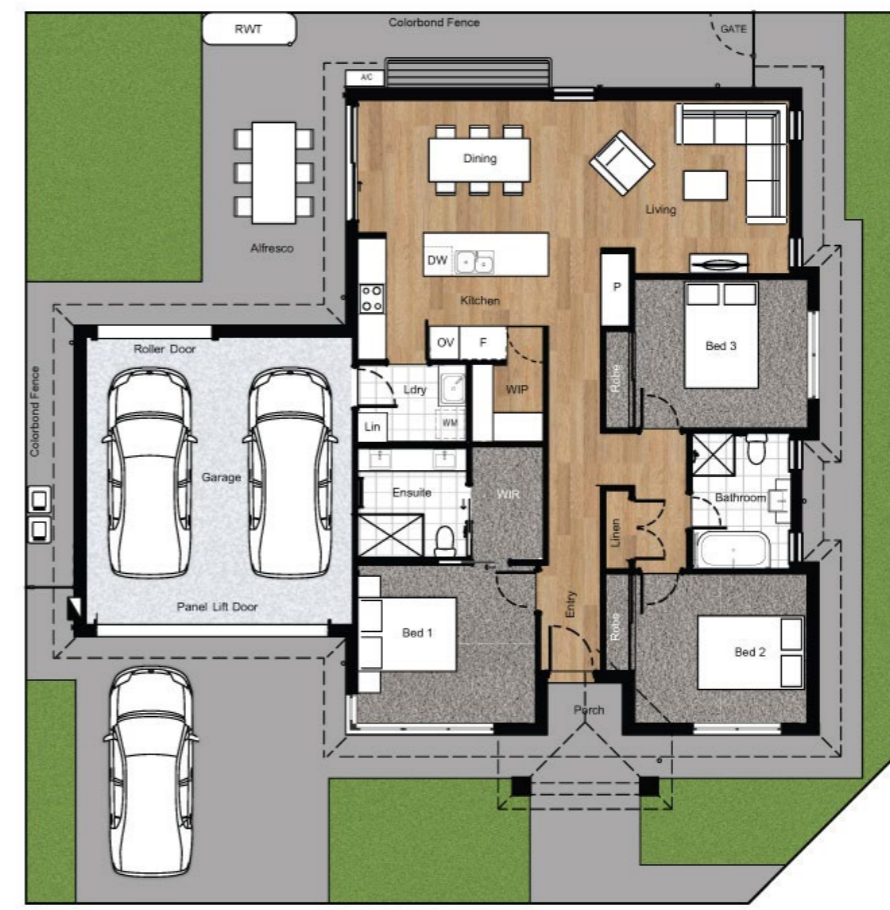
 3
  2
  1
  2

03 . ADDISON

Addison is a unique Lanser Living home that has been designed on a compact allotment to upsize your lifestyle. Created for low-maintenance living, this intelligent floorplan offers you more time to enjoy the things you love doing.

From its wide entrance and high ceilings through to its well-appointed kitchen and open plan living area – Addison offers plenty of room for guests and entertaining. The dining room extends out to a large alfresco area and the home comes landscaped with easy-care plants.

With a double garage, generous storage and ample accommodation – Addison is a stylish choice for families looking for a lock-up-and-go lifestyle. Each Lanser Living home will be surrounded by a network of parks, walking trails and play spaces designed to maximise convenience and healthy living.



Addison - Ground Floor

*1. All images are for illustrative purposes only and should be used as a guide. Certain fixtures, finishes and features may also vary from actual development. 2. House and Land Package pricing is based on the standard house plan and are subject to change in the event there are any variations to the structure, floorplan or finishes. Stamp duty, legal fees or any other settlement costs associated with the purchase are not included as part of the advertised price. 3. Purchasers should confirm all plans, specifications, inclusions and pricing with Lanser prior to entering into any contracts. 4. We have taken great care to ensure the accuracy of the information provided, however Lanser gives no warranty and makes no representation as to the accuracy or sufficiency of any description, photograph, floorplan, illustration or statement. 5. Please contact a Lanser sales consultant if you require any further information. Every care has been taken to ensure all details are correct at time of printing. E&OE



Artist's impression. Final selections subject to change



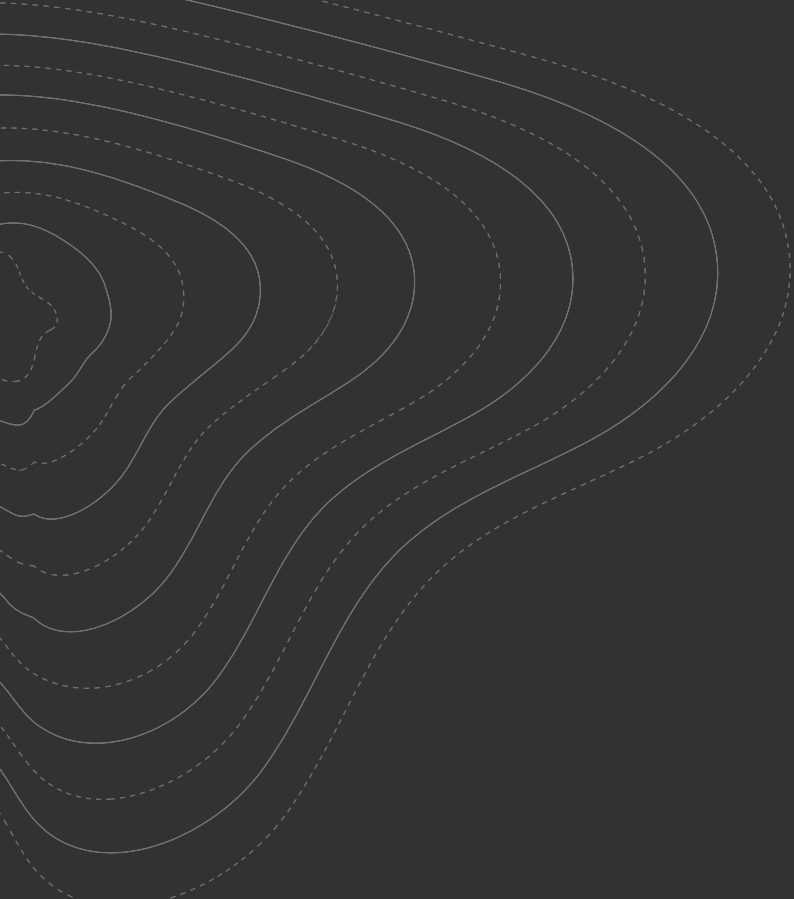
Artist's impression. Final selections subject to change



Artist's impression. Final selections subject to change



Artist's impression. Final selections subject to change



LANSER *living*



lanser.com.au/lanser-living